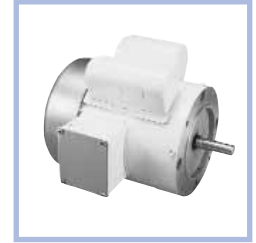


# PowerWash™ XT Washdown Duty, Single Phase

White Epoxy, Totally Enclosed

**Applications:** Gear reducers, pumps, fans, blowers, conveyors, and other machinery found in food processing, dairies, slaughter houses, beverage plants, car washes, and other high humidity or wet environments or where motor is subject to high pressure washdowns.



- Features:**
- Double sealed ball bearings
  - 303 Stainless steel shaft with spring loaded contact seals in each endshield
  - Encapsulated electronic starting switch is impervious to moisture
  - Cast oversized conduit box with high temperature Nitrile gaskets and threaded entrance
  - Internal corrosion resistant coatings on frame, base, endshields, rotor and stator
  - Stainless steel conduit box cover, nameplate, fan guard (TEFC) and hardware
  - USDA-approved, white epoxy RUST-OLEUM® paint
  - Plugged drain holes in each endshield for all angle mounting
  - Capacitor start induction run design for high starting torque unless otherwise noted
  - Class F insulation
  - 1.15 Service Factor
  - UL Recognized and CSA Certified

## Rigid Base

| HP    | RPM  | VOLTS       | FRAME | CAT NO. | MODEL NO.   | LIST PRICE | MULT SYMB | F.L. AMPS     | APPROX. WGT. LBS. | "C" DIM. | FOOT NOTES |
|-------|------|-------------|-------|---------|-------------|------------|-----------|---------------|-------------------|----------|------------|
| 1/2   | 1800 | 115/208-230 | 56    | N680    | 56C17W5336  | \$427      | F3        | 8.8/4.4-4.4   | 30                | 10.81    |            |
| 3/4   | 1800 | 115/208-230 | 56    | N681 ★  | 56C17W5337  | \$501      | F3        | 10.8/5.4-5.4  | 25                | 11.31    | d          |
| 1     | 1800 | 115/208-230 | 56    | N682    | 56C17W5338  | \$573      | F3        | 12.8/6.4-6.4  | 34                | 11.81    |            |
| 1 1/2 | 1800 | 115/208-230 | 145T  | N683    | 145TCWR5326 | \$730      | F3        | 19.0/9.5-9.5  | 50                | 13.75    |            |
| 2     | 1800 | 115/208-230 | 182T  | N684    | 182TCWR7026 | \$1,061    | F3        | 25.2/12.6-2.6 | 60                | 13.46    |            |

★ Stock Model

## C-Face

| HP    | RPM  | VOLTS       | FRAME | CAT NO. | MODEL NO.  | LIST PRICE | MULT. SYMB. | F.L. AMPS    | APPROX. WGT. LBS. | "C" DIM. | FOOT NOTES |
|-------|------|-------------|-------|---------|------------|------------|-------------|--------------|-------------------|----------|------------|
| 1/3   | 1800 | 115/208-230 | 56C   | N531 ★  | 56C17W5326 | \$424      | F3          | 6.4/3.2-3.2  | 26                | 10.69    |            |
| 1/2   | 3600 | 115/208-230 | 56C   | N532    | 56C34W5302 | \$424      | F3          | 7.6/4.0-3.8  | 28                | 10.69    |            |
|       | 1800 | 115/208-230 | 56C   | N523 ★  | 56C17W5327 | \$435      | F3          | 8.8/4.4-4.4  | 32                | 11.19    |            |
| 3/4   | 3600 | 115/208-230 | 56C   | N524 ★  | 56C34W5303 | \$427      | F3          | 10.0/5.2-5.0 | 34                | 11.69    |            |
|       | 1800 | 115/208-230 | 56C   | N525 ★  | 56C17W5328 | \$503      | F3          | 10.8/5.4-5.4 | 34                | 11.69    |            |
| 1     | 3600 | 115/208-230 | 56C   | N526 ★  | 56C34W5304 | \$429      | F3          | 12.0/6.2-6.0 | 32                | 12.19    |            |
|       | 1800 | 115/208-230 | 56C   | N527 ★  | 56C17W5329 | \$570      | F3          | 12.8/6.4-6.4 | 37                | 12.19    |            |
| 1 1/2 | 3600 | 115/208-230 | 56C   | N528    | 56C34W5305 | \$633      | F3          | 17.0/8.5-8.5 | 39                | 12.69    |            |
|       | 1800 | 115/208-230 | 56C   | N529    | 56C17W5330 | \$730      | F3          | 19.0/9.5-9.5 | 46                | 13.69    |            |

★ Stock Model

## C-Face with Rigid Base

| HP    | RPM  | VOLTS       | FRAME | CAT NO. | MODEL NO.  | LIST PRICE | MULT. SYMB. | F.L. AMPS    | APPROX. WGT. LBS. | "C" DIM. | FOOT NOTES |
|-------|------|-------------|-------|---------|------------|------------|-------------|--------------|-------------------|----------|------------|
| 1/3   | 1800 | 115/208-230 | 56C   | N557 ★  | 56C17W5331 | \$427      | F3          | 6.4/3.2-3.2  | 31                | 10.69    |            |
| 1/2   | 3600 | 115/208-230 | 56C   | N558 ★  | 56C34W5307 | \$427      | F3          | 7.6/4.0-3.8  | 28                | 10.69    |            |
|       | 1800 | 115/208-230 | 56C   | N559 ★  | 56C17W5332 | \$441      | F3          | 8.8/4.4-4.4  | 31                | 11.19    |            |
| 3/4   | 3600 | 115/208-230 | 56C   | N540 ★  | 56C34W5308 | \$431      | F3          | 10.0/5.2-5.0 | 34                | 11.69    | d          |
|       | 1800 | 115/208-230 | 56C   | N541 ★  | 56C17W5333 | \$500      | F3          | 10.8/5.4-5.4 | 33                | 11.69    |            |
| 1     | 3600 | 115/208-230 | 56C   | N542 ★  | 56C34W5309 | \$433      | F3          | 12.0/6.2-6.0 | 34                | 12.19    |            |
|       | 1800 | 115/208-230 | 56C   | N543 ★  | 56C17W5334 | \$575      | F3          | 12.8/6.4-6.4 | 36                | 12.19    |            |
|       | 1800 | 115/208-230 | 56HC  | N553    | 56B17T5304 | \$521      | F3          | 12.8/6.4-6.4 | 36                | 13.43    | N,1,5,6    |
| 1 1/2 | 3600 | 115/208-230 | 56C   | N544 ★  | 56C34W5310 | \$634      | F3          | 17.0/8.5-8.5 | 39                | 12.69    |            |
|       | 1800 | 115/208-230 | 56HC  | N545 ★  | 56C17W5335 | \$734      | F3          | 19.0/9.5-9.5 | 45                | 13.69    | 5          |

★ Stock Model

**Footnotes:**

- d Will become build-up item when current stock is gone
- N Totally Enclosed, Non-Ventilated
- 1 Capacitor Start/Capacitor Run design for reduced amperage
- 5 56H, 143T, and 145T combination base with 12 mounting holes
- 6 Bolt-on, removable base for footless mounting option.